

SPS 6 Temporary West lane closure

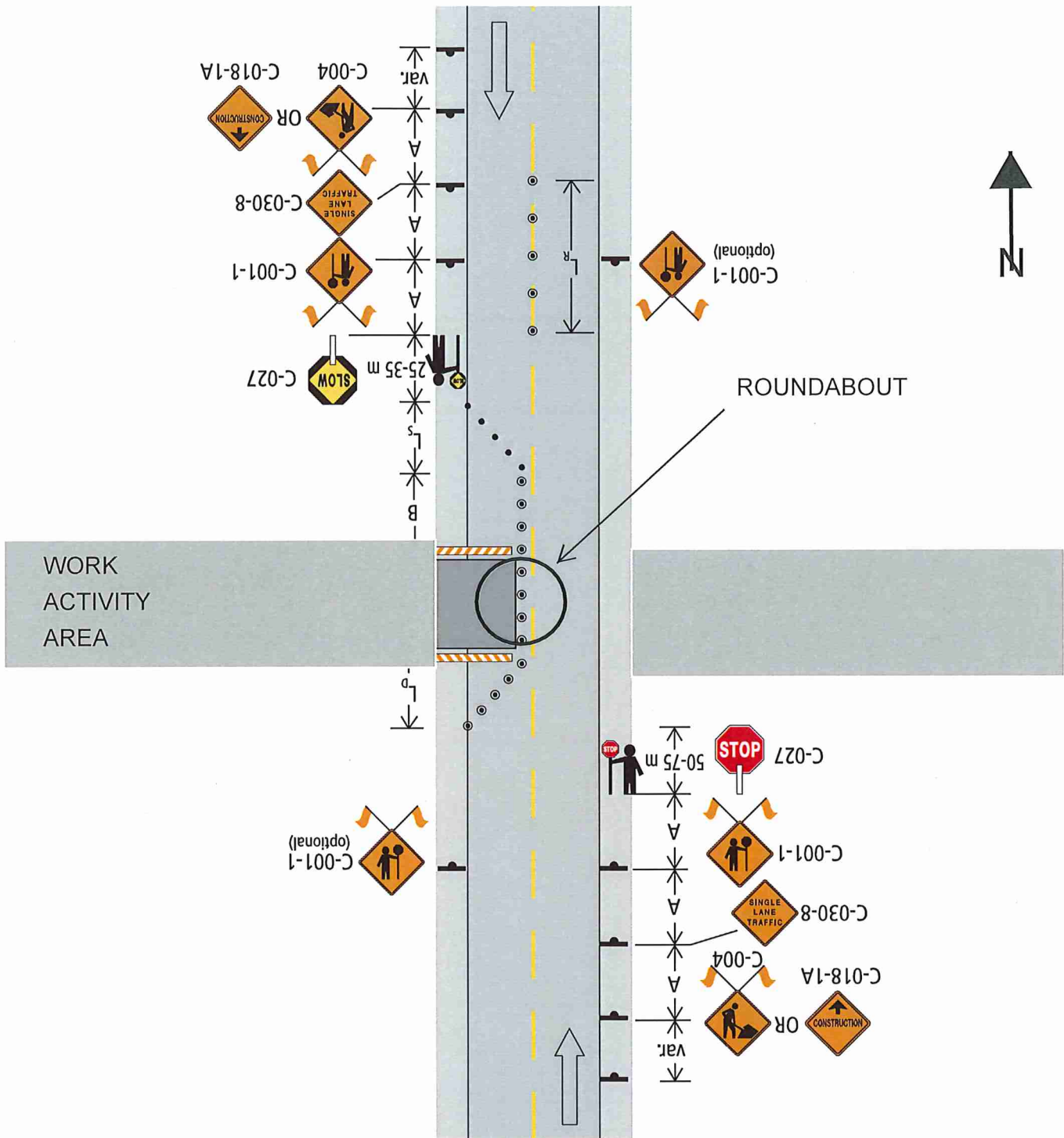


Figure 7.8: Lane Closure with TCPs – Single Lane Alternating – Short and Long Duration



GENERAL NOTES

Road Closure

TCP MIGHT BE OMITTED
PROVIDED ROAD CLEARANCE IS
ADEQUATE AND TRAFFIC
VOLUMES ARE LIGHT

LEGEND

— 2.1M High TEMPORARY FENCE

🚧 TRAFFIC SIGNS

SPS #5, #6 and #7
Upgrade and Goldspring
PRV Replacement

